



# Early Childhood Resource Center

## IMPACT DATA

*The mission of Early Childhood Resource Center is to promote the healthy development of young children by strengthening families, improving the quality of early learning experiences, increasing school and community readiness, and informing public policy.*

### CHILD CARE SERVICES PROVIDED

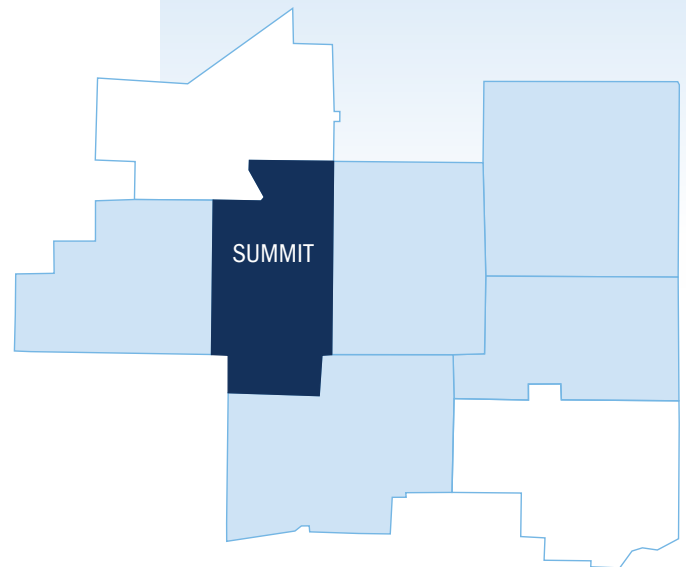
- Workforce recruitment, retention, and onboarding
- Staff coaching, training, and quality improvement
- Administrative business support and leadership development
- Credentialing and business start-up services
- Family engagement support

### OTHER SERVICES PROVIDED

- Child care referrals
- Fatherhood services
- Parent education and ambassador services
- SPARK Kindergarten Readiness Program
- Foster, adoptive, and kinship resources

### OUR SERVICE AREA

Early Childhood Resource Center is the state-appointed Child Care Resource and Referral agency serving Mahoning, Medina, Portage, Stark, Summit, and Trumbull counties.



EARLY CHILDHOOD  
RESOURCE CENTER

*A Ministry of the Sisters of Charity Health System*



Published March 2025

**CANTON** Primary Office  
1718 Cleveland Ave. NW  
Canton, Ohio 44703

**AKRON**  
37 N. High Street, Ste. D  
Akron, Ohio 44308

**BOARDMAN**  
6414 Market Street  
Boardman, Ohio 44512

### CONTACT US

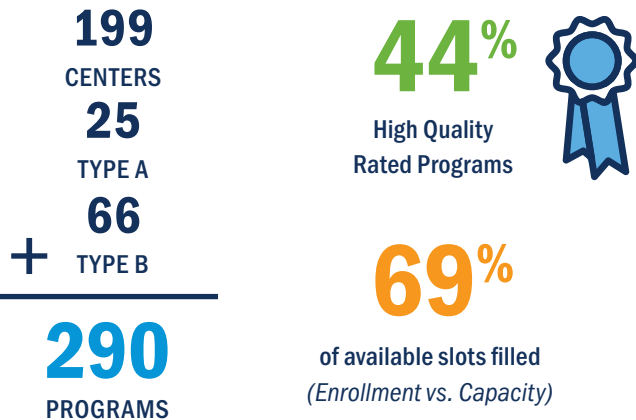
877.691.8521 | 330.491.3272 | [ecresourcecenter.org](http://ecresourcecenter.org)



# Summit County AT-A-GLANCE



## LICENSED CHILD CARE PROGRAMS



## CHILD CARE WORKFORCE

### Reported Challenges

- **Staffing:** low qualifications, wages, lack of benefits, and turnover
- **Decreasing enrollment:** high cost of care, non-traditional hours needed

**\$13.95**

Mean Wage  
(State of Ohio)

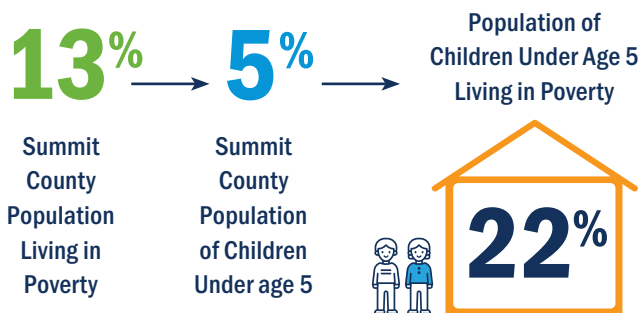
**2.6%**

Average  
Turnover

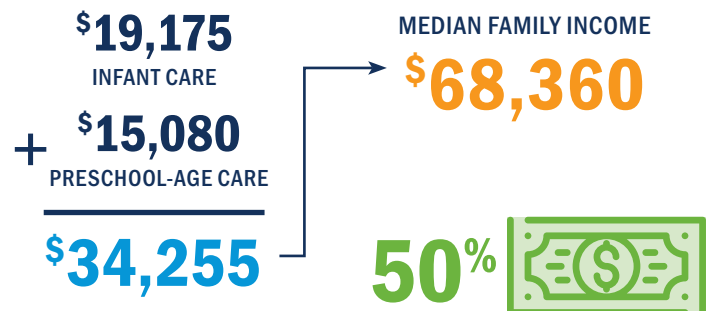
**5,639**

Total Summit County  
Child Care Workforce

## COUNTY DEMOGRAPHICS

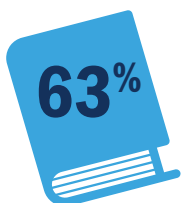


## COST OF CHILD CARE



**The Breakdown:** A family with two children, making the median income in Summit County would spend **50% of their income on child care.**

## OHIO KINDERGARTEN READINESS ASSESSMENT (KRA)



**63% NOT DEMONSTRATING READINESS**  
(Percentage of students not on track)

The KRA is a tool used by the state to gauge each child's preparedness for kindergarten instruction based on Ohio's kindergarten standards, focusing on foundational skills and behaviors. At the beginning of each school year, children entering public and community school kindergarten programs, and those chartered non-public schools that have opted to participate, are given the assessment, which measures a child's knowledge and abilities in four areas of early learning: **1. Social foundations** (including social and emotional development and approaches toward learning); **2. Mathematics**; **3. Language and literacy**; **4. Physical well-being and motor development**

## WHY INVESTMENTS MATTER

- **90% of brain development** takes place by age 5
- Investments in high quality care have a **13% return on investment**
- **Parents rely on high quality, affordable child care** to participate in the workforce



*Investing in high quality early care and education boosts economic growth, increases workforce participation, enhances earnings, improves business productivity, and leads to better child outcomes.*

Published March 2025

**SOURCES:** Ohio Department of Children and Youth; US Bureau of Labor Statistics; Ohio Department of Education and Workforce; United States Census Bureau; Groundwork Ohio; Surveys of Child Care Providers in Summit County, Ohio; The Heckman Equation

**EARLY CHILDHOOD  
RESOURCE CENTER**

*A Ministry of the Sisters of Charity Health System*